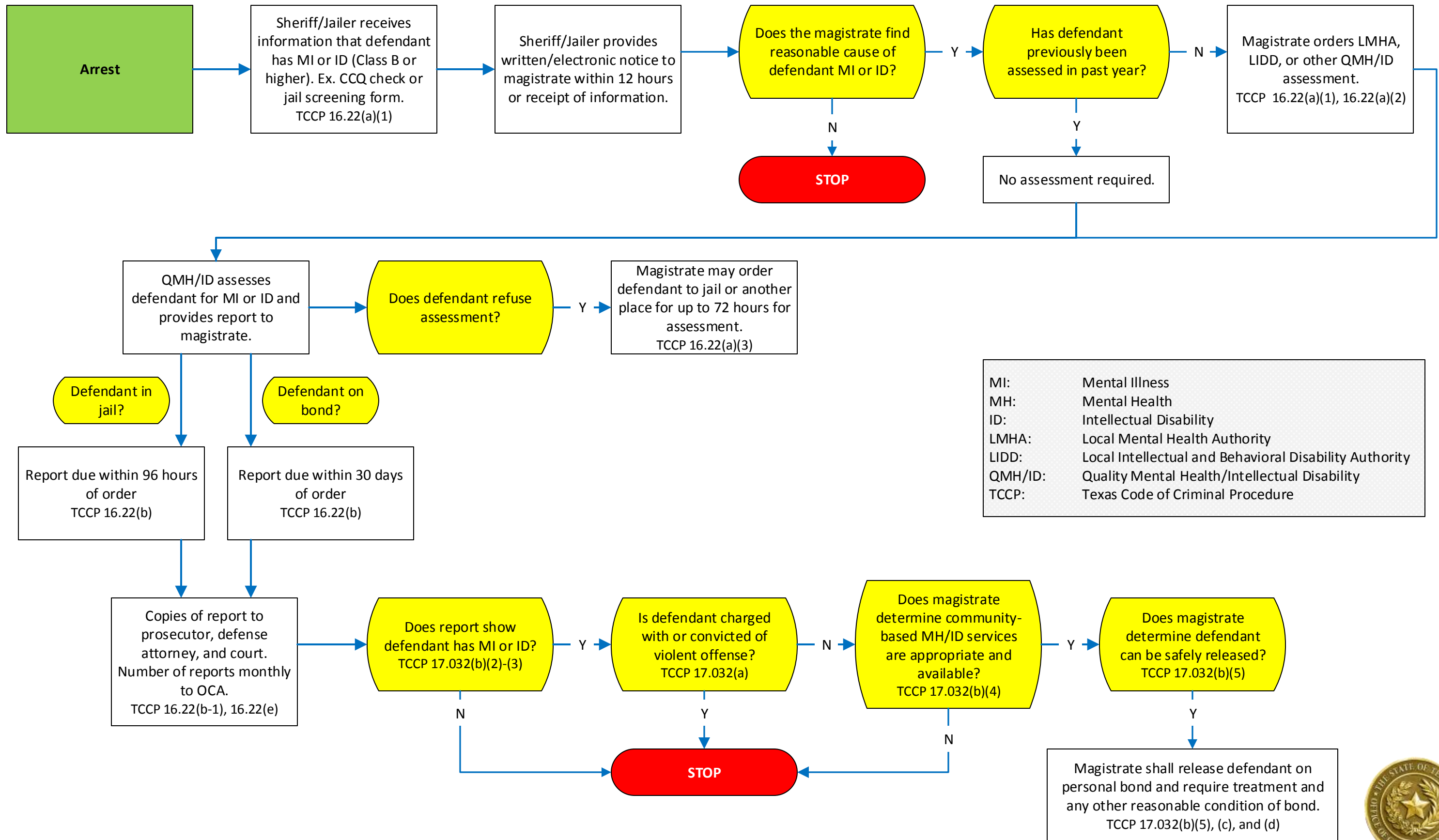


Screening/Assessment for Arrested Defendant with MI/ID



MI:	Mental Illness
MH:	Mental Health
ID:	Intellectual Disability
LMHA:	Local Mental Health Authority
LIDD:	Local Intellectual and Behavioral Disability Authority
QMH/ID:	Quality Mental Health/Intellectual Disability
TCCP:	Texas Code of Criminal Procedure

