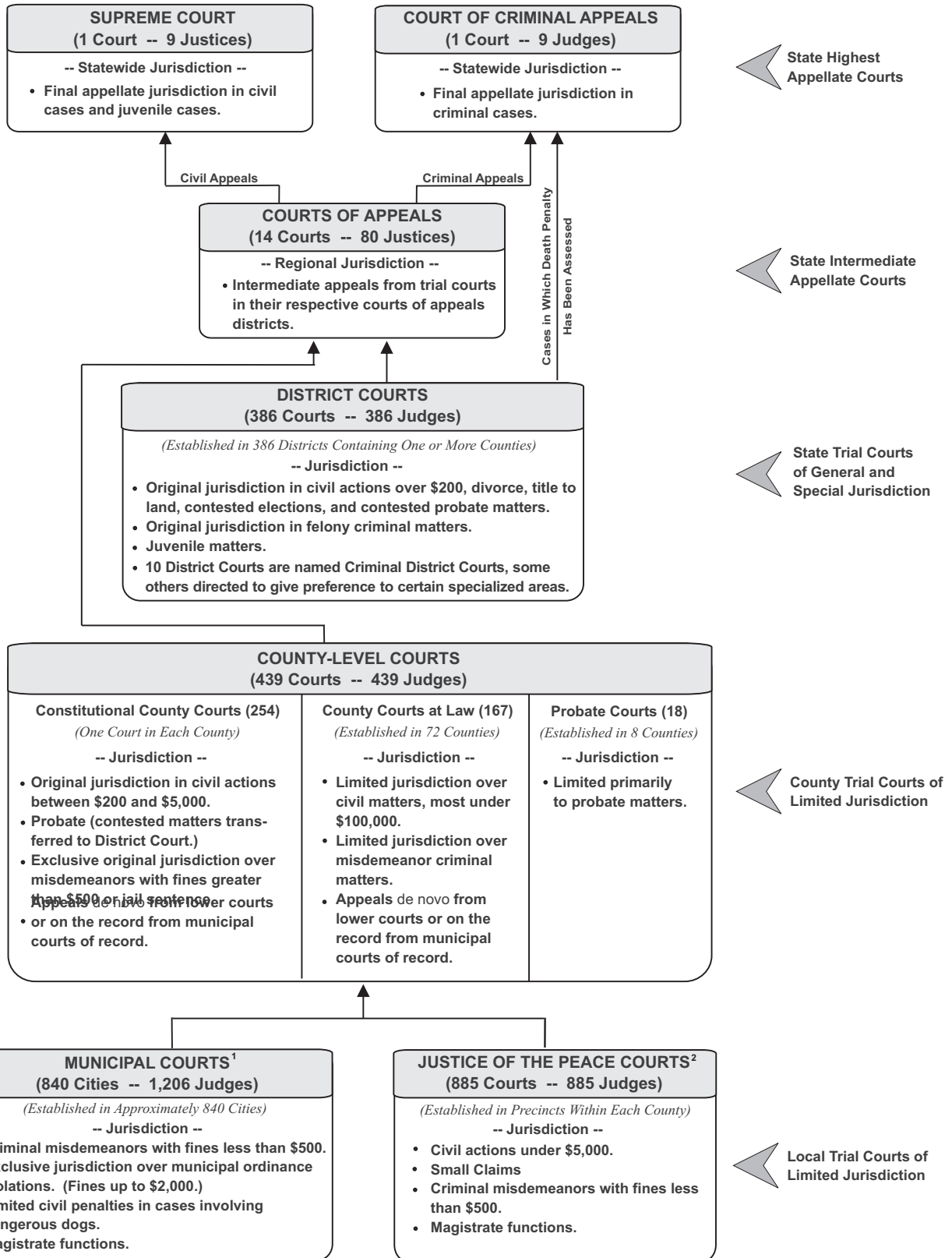


COURT STRUCTURE OF TEXAS

SEPTEMBER 1, 1994



¹ Some Municipal Courts are courts of record -- appeals from those courts are taken on the record to the county-level courts.

² All Justice of the Peace Courts and most Municipal Courts are not courts of record. Appeals from these courts are by trial de novo in the county-level courts; in some instances to the district courts.