

COVID-19 Operating Plan for the City of Krum Municipal Court.

City Judiciary

Recognizing the need to ensure the health and safety of litigants, attorneys, visitors, court staff, judges, and other individuals entering the buildings housing the courts, the courts of **City of Krum** will implement the following protective measures:

General

1. The judge will comply with the Emergency Orders issued by the Supreme Court of Texas and Court of Criminal Appeals, including conducting in-person proceedings according to the guidance issued by the Office of Court Administration regarding social distancing, maximum group size, and other restrictions and precautions.
2. The judge will use all reasonable efforts to conduct proceedings remotely.
3. The presiding judge of the municipal court will maintain regular communication with the local health authority and county judge and mayor and adjust this operating plan as necessary with conditions in the city.
4. Judge Robin Ramsay will begin setting non-essential in-person proceedings no sooner than June 16, 2020

Judge and Court Staff Health

1. Judge and court staff who can perform the essential functions of their job remotely will telework when possible.
2. Judge and Court Staff Monitoring Requirements: The Judge, Prosecutor, Bailiff, Court Clerk and all other staff that will be in the court room temperatures will be taken. Personal Protective equipment will be worn.
3. Judge or court staff who feel feverish or have measured temperatures equal to or greater than 99.6°F, or with new or worsening signs or symptoms of COVID-19 such as cough, shortness of breath or difficulty breathing, chills, repeated shaking with chills, muscle pain, headache, sore throat, loss of taste or smell, diarrhea, or having known close contact with a person who is confirmed to have COVID-19 will not be permitted to enter the building and should seek medical advice.
4. Judges and court staff will be required to wear face coverings, practice social distancing, and practice appropriate hygiene recommendations at all time.
5. Protective Measures: Temperatures will be taken when entering, masks provided, hand sanitizers have been added in the common areas for all parties.

Scheduling

1. The following court schedules are established to reduce occupancy in the court building:

Example of our dockets, they are staggered and limiting the number of defendants set:

Attorney Docket, June 16, 2020 @ 5:30 p.m.

10 Defendants on June 16, 2020 @ 6:15 p.m.

10 Defendants on July 7, 2020 @ 5:30 p.m.

15 Defendants on July 7, 2020 @ 6:15 p.m.

10 Defendants on July 7, 2020 @ 7:00 p.m.

Attorney Docket, July 21, 2020 @ 5:30

10 Defendants on July 21, 2020 @ 6:15 p.m.; etc.

Vulnerable Populations

1. Individuals who are over age 65 and individuals with serious underlying health conditions, such as high blood pressure, chronic lung disease, diabetes, obesity, asthma, and those whose immune systems are compromised such as by chemotherapy for cancer or other conditions requiring such therapy are considered to be vulnerable populations.
2. Each judge will include information on orders setting hearings, dockets notices, and in other communications notifying individuals who are in vulnerable populations of the ability to contact the court to identify themselves as a vulnerable individual and receive accommodations. A notice with this information will be posted on the courts' websites and in conspicuous locations around the court building (a copy of which is attached).
3. Vulnerable populations who are scheduled for court will be accommodated by rescheduling when requested.

Social Distancing

1. All persons not from the same household who are permitted in the court building will be required to maintain adequate social distancing of at least 6 feet.
2. Each restroom has been evaluated to determine the appropriate capacity to ensure social distancing and the maximum capacity has been posted on each restroom door.
3. Public common areas, including breakrooms and snackrooms, have been closed to the public.

Gallery

4. The maximum number of persons permitted in the gallery of each courtroom has been determined and posted. The maximum capacity of the courtroom will be monitored and enforced by court staff.
5. The gallery of the courtroom has been marked to identify appropriate social distancing in the seating. Seating is limited to every other row.

Well

6. In each courtroom, the counsel tables, witness stand, judge's bench, and clerk, court reporter, and bailiff seating have been arranged in such a way so that there is social distancing of at least 6 feet between each space.

Hygiene

1. Hand sanitizer dispensers have been placed at the entrances to the building, outside of each courtroom, and outside of bathrooms.
2. Tissues have been placed near the door of the courtroom, at counsel tables, at the witness stand, on the judges' benches, and in the hallways.
3. The Department of State Health Service's "Stop the Spread of Germs Flyer" has been posted in multiple locations on each floor of the court building.

Screening

1. When individuals attempt to enter the court building, Court Clerk will ask the individuals if they are feeling feverish; have a cough, shortness of breath, or difficulty breathing; or have been in close contact with a person who is confirmed to have COVID-19. Individuals who indicate yes to any of these questions will be refused admittance to the court building.
2. When individuals attempt to enter the court building, Krum PD Officer will use an infrared thermometer to determine the temperature of the individual. Individuals whose temperature equals or exceeds 100.0°F will be refused admittance to the court building.
3. Staff who are screening individuals entering the court building will be provided personal protective equipment, including disposable face masks, disposable gloves, and hand sanitizer nearby.

Face Coverings

1. All individuals entering the court building will always be required to wear face coverings .
2. Individuals will be encouraged to bring cloth face coverings with them, but if the individual does not have a cloth face covering, a disposable face mask will be provided.
3. Individuals who will be required to be in the court building for over 1 hour will be provided surgical masks and required to wear them while in the court building if the supply is available.

Cleaning

1. Court building cleaning staff will clean the common areas of the court building so that common spaces are cleaned at least every 45 minutes.
2. Court building cleaning staff will clean the courtrooms between every hearing, between morning and afternoon proceedings, and at the end of each day the courtroom is used.
3. Court building cleaning staff have been provided cleaning supplies shown to be effective with this coronavirus.
4. Court building cleaning staff have been trained on proper cleaning techniques and provided appropriate personal protective equipment.

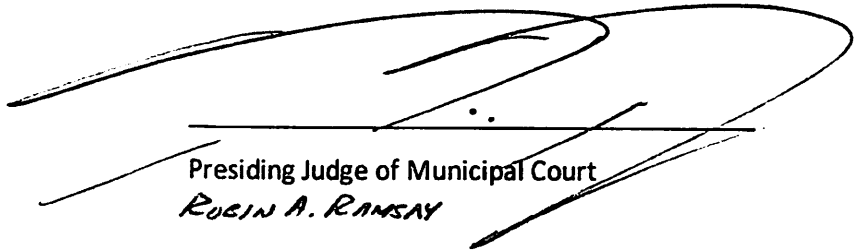
Other

A notice will be sent with all our notice to appears so that defendants are aware of what to expect during court when appearing in person.

We do not have any elevators nor transport inmates from the jail to the court buildings/vice versa.

I have attempted to confer with all judges of courts with courtrooms in the court building regarding this Operating Plan. In developing the plan, I consulted with the local health authority and county judge and mayor, documentation of which is attached to this plan. I will ensure that the judges of courts with courtrooms in the court building covered by this Operating Plan conduct proceedings consistent with the plan.

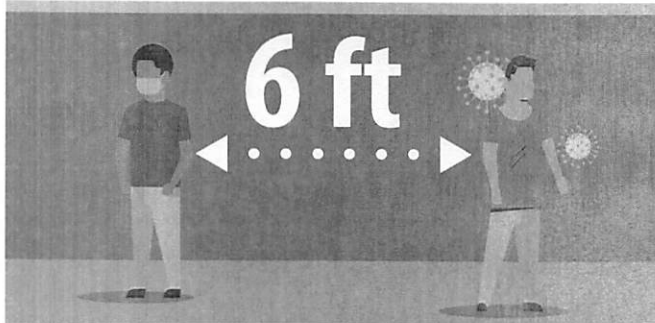
Date: *JUNE 10th, 2020*



Presiding Judge of Municipal Court
ROBIN A. RAMSAY

Stop the Spread of Germs

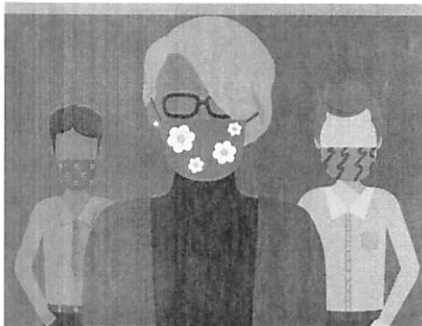
Help prevent the spread of respiratory diseases like COVID-19.



Stay at least 6 feet
(about 2 arms' length)
from other people.



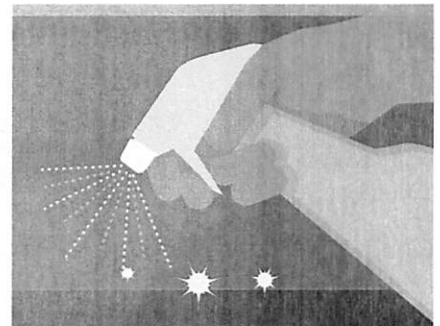
Cover your cough or sneeze with a
tissue, then throw the tissue in the
trash and wash your hands.



When in public, wear a
cloth face covering over
your nose and mouth.



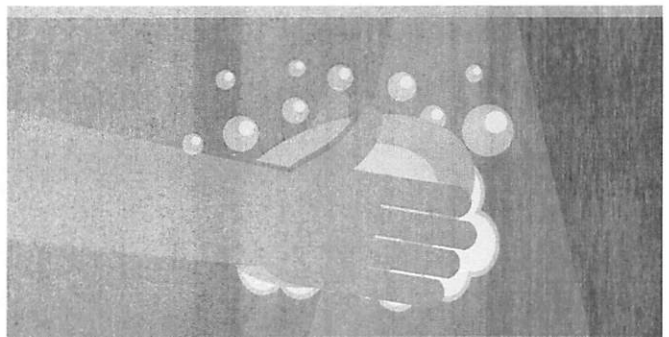
Do not touch your
eyes, nose, and mouth.



Clean and disinfect
frequently touched
objects and surfaces.



Stay home when you are sick,
except to get medical care.



Wash your hands often with soap
and water for at least 20 seconds.



[cdc.gov/coronavirus](https://www.cdc.gov/coronavirus)